

Zehnder Charleston Electric

Electric operation

Product data sheet

always the best climate



The Zehnder Charleston Electric is an electric, oil filled multi-column radiator available in 6 sizes ideal for installation in loft conversions. The complementary Zehnder Charleston Electric Plinth low level model is perfectly suited to conservatories and in front of low-level windows. Radiator with powder coating, in colour RAL 9016 as standard or in special colour.

Advantages

- Oil-filled multi-column electric radiator
- Vertical steel round tubes Ø 25 mm, 3 and 5 columns versions available
- Standard version primed and painted in RAL 9016
- Fixing: model NZ 060-XXX: Delivered ready to install with 2 wall brackets in colour of radiator. Model NZ 030-100: Delivered ready to install with 2 welded feet in colour of radiator.

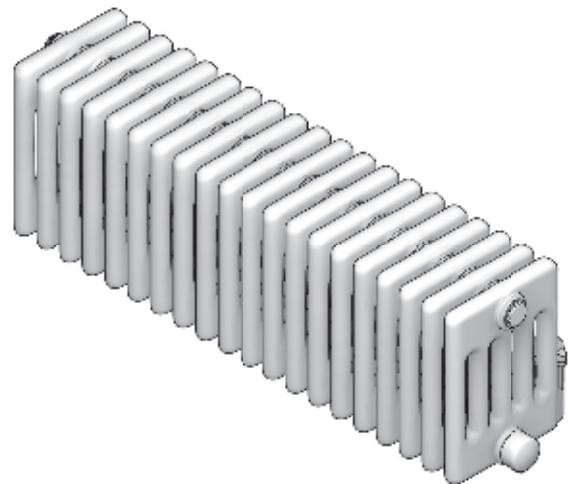
Special benefits for electric operation

- White control unit on the right
- Radiator filled with heat transfer liquid
- With integrated electric heating element
- Electronic thermostat, 5 operating modes
- Without plug, appliance class II
- Protection class IP34
- Pilot cable integrated
- Supply voltage: 230 V

Model overview



Model 3-column



Model 5-column

Model 3-column

Model	HT	L	T	Power electric heating element
	mm	mm	mm	Watts
NZ-060-053/GF	600	460	100	500
NZ-060-062/GF	600	552	100	750
NZ-060-076/GF	600	690	100	1000
NZ-060-089/GF	600	828	100	1250
NZ-060-103/GF	600	966	100	1500
NZ-060-131/GF	600	1242	100	2000

HT = total height, L = length, T = depth

Model 5-column

Model	HT	L	T	Power electric heating element
	mm	mm	mm	Watts
NZ-030-100/GF	300	920	173	1000

HT = total height, L = length, T = depth

Accessories