

Zehnder Terraline

Hydronic operation

Product data sheet

always the best climate



The Zehnder Terraline trench heater offers an elegant alternative wherever free-standing radiators should be avoided for reasons of aesthetics or underfloor heating is not possible. All that is visible is the frame, complete with integrated decorative grille. Zehnder Terraline utilises the rising warm air to create pleasant, natural warmth. The trench heater is ideal for use where there are large areas of full height glazing.

Advantages

- Aluminium and copper construction enable short response times for fast heating of rooms
- Invisible heating power, built in to the floor
- Built-in floor construction makes it ideal for use in front of large windows
- Silent operation makes it suitable for different areas of application
- Wide range of models supports versatile use
- Hidden connection technology in the floor
- High thermal output means rooms are heated up rapidly
- High thermal output means that even large rooms are heated up rapidly
- Combines with Zehnder Comfosystems for comfortable indoor ventilation
- Powerful heat exchanger is compatible with heat pump and/or low temperature systems
- Special solutions support a wide range of application, such as curved or angled options, or versions with cut-outs
- The grille can be walked on and ensures the necessary stability
- With several designs available, the decorative grille and frame make it possible to create an individual look
- High level of thermal output also for old buildings with a high heat load
- An alternative in old buildings where radiators should be avoided or underfloor heating is not possible

Model overview



Front overview
UN-14-17



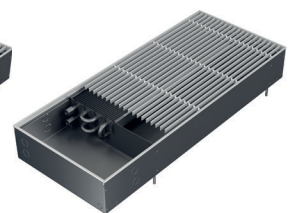
Front overview
UN-14-21



Front overview
UN-14-25



Front overview
UN-14-34



Front overview
UN-14-42

All models

Technical specifications for length 1000 mm

Model	H mm	T mm	Heat output			
			75/65/20 °C	70/55/24 °C	55/45/24 °C	55/45/20 °C
			Watts	Watts	Watts	Watts
UN-09-17	90	170	143	98	55	67.8
UN-09-21	90	215	199	137	78	95.3
UN-09-25	90	255	252	176	103	125
UN-09-34	90	340	300	209	122	148
UN-09-42	90	420	350	244	142	173
UN-11-17	110	170	173	118	66	81.6
UN-11-21	110	215	218	145	79	98.7
UN-11-25	110	255	295	201	114	140
UN-11-34	110	340	381	264	153	186
UN-11-42	110	420	424	294	170	207
UN-14-17	145	170	177	120	67	82.6
UN-14-21	145	215	231	156	87	107
UN-14-25	145	255	338	232	132	162
UN-14-34	145	340	501	345	197	241
UN-14-42	145	420	613	425	245	300
UN-19-17	190	170	200	136	76	93.9
UN-19-21	190	215	276	185	101	126
UN-19-25	190	255	328	226	130	159
UN-19-34	190	340	518	353	198	244
UN-19-42	190	420	725	495	279	344

H = height, T = depth

75/65/20 = Nominal heat output according to EN 442

Accessories