

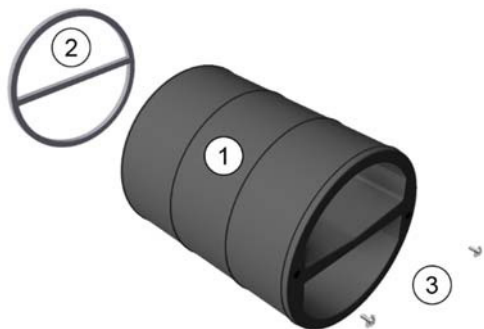
ComfoAir 70

Installation instructions for extension set

Intended purpose

The extension set consists of the EPP housing extension and the installation accessories. It is used for installing the ComfoAir 70 ventilation unit in external walls with a final wall thickness of 600 mm to 900 mm.

Scope of delivery



Item	Description
1	EPP housing extension; L = 300 mm
2	Self-adhesive swelling sealing tape; for sealing the cross-sectional contours of air-conveying sections in the moulded EPP parts; pre-cut length 1 m
3	2x raised-head screws, M5x12, 2x washers, M5 (5.3 x 15 x 1.2) mm (already screwed in when the equipment is delivered); for connection to the ComfoAir 70 exterior wall panel in the correct position

Preparing for installation

Check that the working area is flat and that the wall mounting pipe can be sealed correctly on the façade surface. If any of the PVC wall mounting pipe is protruding, trim it so that it is flush with the façade and use suitable sealant to seal the façade connection around the PVC wall mounting pipe.



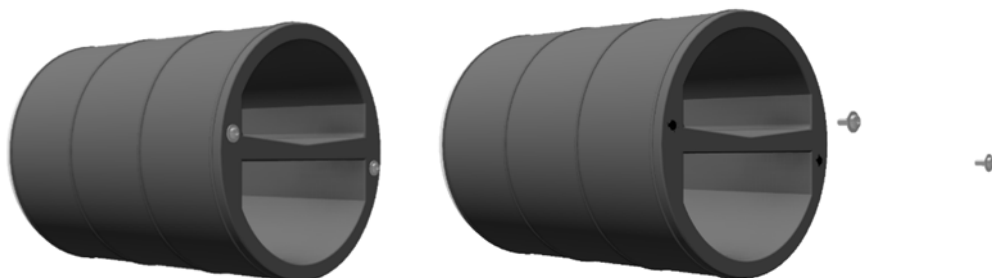
Glue the swelling sealing tape from the ComfoAir 70 accessories to the contour on the back of the exterior wall panel bottom cover.



Glue the swelling sealing tape (2) from the extension set accessories to the contour of the free face side on the EPP housing extension (1).



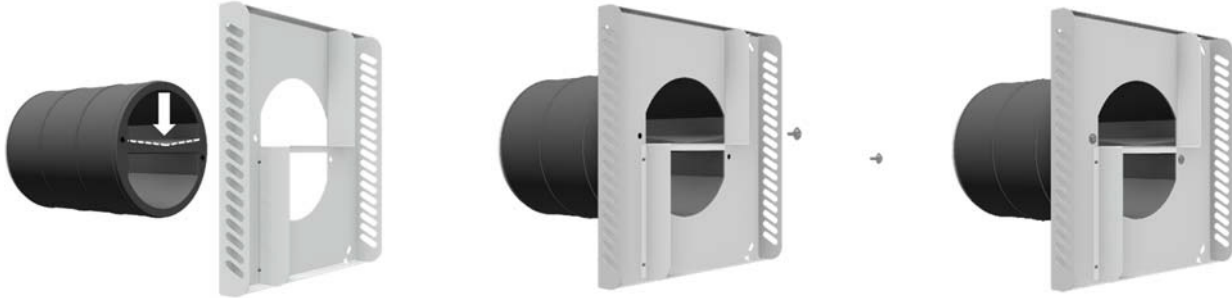
Unscrew the two raised-head screws and washers (3) from the screw plugs on the face side of the EPP housing extension (1).



Installing the EPP housing extension

As illustrated below, position the bottom cover so that the back meets the face side of the screw plugs for the EPP housing extension (1). Fix the bottom cover in place using the two M5x12 screws (3) and the matching washers (3).

⚠ Make sure to position the air section so that the recess in the partition wall is at the top (indicated by the arrow)!

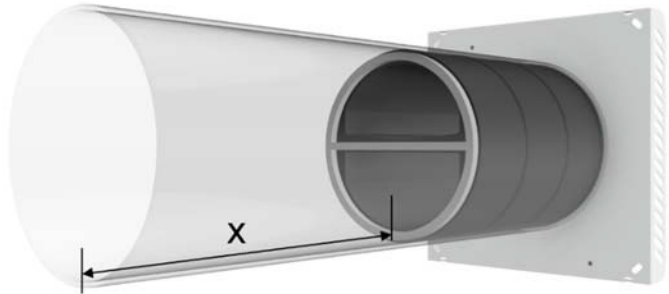


With the bottom cover installed, push the EPP housing extension into the PVC wall mounting pipe and use suitable fixing materials to fix the bottom cover to the four fixing points (shown as long holes) in a horizontal position on the façade.

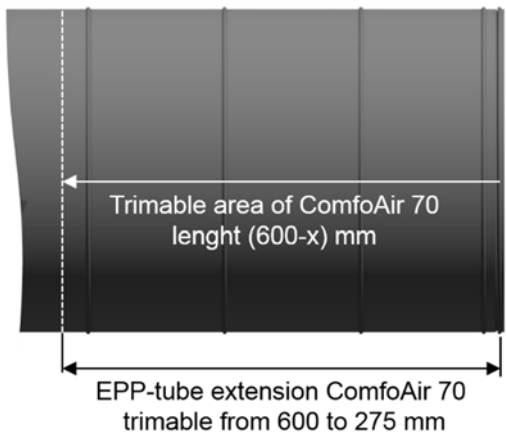


⚠ To protect against penetrating water, the gap between the bottom cover and the façade must be sealed using a suitable sealant.

Measure the length x of the PVC wall mounting pipe from the final interior wall to the pressed-on swelling sealing tape (2) for the EPP housing extension (1).



In the EPP pipe extension area, trim the **ComfoAir 70** by (600-x) mm.



⚠ Trim using a suitable tool (utility knife) around the circumference and at a right angle to the axis of symmetry of the ComfoAir 70 EPP pipe extension.

Then perform the installation steps as outlined in the ComfoAir 70 operating and installation instructions.