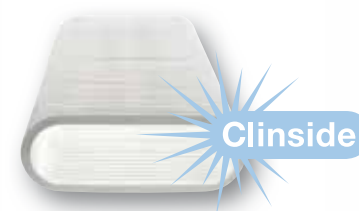


## Ventilation tube

## Zehnder ComfoTube flat 51

### Benefits

- Oval, flexible flattened pipe (51mm)
- Flexible layout
- High-quality food grade plastic (HDPE)
- Clinside smooth internal coating
- Centrally and decentrally adjustable air volumes
- Low loss of pressure
- Easy to clean
- Hygiene certificate awarded by the Hygiene Institute for the Ruhrgebiet



ComfoTube Flat 51 ventilation tube

### Article numbers

Designations	Art. no.
ComfoTube flat 51, roll: 20 m	990 328 002
ComfoTube flat 51, roll: 50 m	990 328 063

### Description of ComfoTube flat 51

Flexible, externally crimped, stable air distribution pipe. The ComfoTube flat 51 can be laid directly on bare floors within the insulation layer.

### Specification

Material:	pure HDPE
Min. horizontal bend radius	$r = 3 \times W$
Min. vertical bend radius	$r = 3 \times H$
Operating temperature range:	-25-60°C

### Technical specifications

Data		
Exterior dimensions W/H (mm)	138	51
Interior dimensions W/H (mm)	122	35
Weight per metre in length (g/m)	400	
Metres per roll (m)	20	50
Weight per roll (kg)	8	20
Roll height	30	45
Roll diameter	100	135

### Accessory parts

Designation	Art. no.
Click sleeve flat 51	990 332 014
O-ring flat 51	990 328 352
Locking slide flat 51	990 326 022
Mounting bracket flat 51	990 322 016
Mounting bracket M8 flat 51	990 322 017
End cap flat 51	990 328 252
Bend flat 51 H	990 322 012
Bend flat 51 V	990 322 011
Junction 90/75 to flat 51	990 322 013
Junction 90 to flat 51, 90° bend	990 322 046

### Description of accessories

#### Click sleeve flat 51

HDPE click sleeve that connects easily with ComfoTube flat 51. The joint is sealed via two O-rings (supplied) and locking slides.

#### O-ring/locking slide/mounting bracket flat 51

O-ring seals and locking slides for sealing and fastening. Suitable for use with all ComfoTube flat 51 accessory parts.

O-ring PU: 10 pcs.

Locking slide PU: 20 pcs.

Mounting bracket PU: 10 pcs.

Mounting bracket M8 PU: 10 pcs.

#### End cap flat 51

HDPE end caps for dust-tight sealing of the ComfoTube flat 51 during construction. Can also be used for click sleeves and bends.

#### Bend flat 51 H

90° HDPE bend for connection to the ComfoTube flat 51. For 90° horizontal rerouting. The joint is sealed via two O-rings (supplied) and locking slides.

#### Bend flat 51 V

90° HDPE bend for connection to the ComfoTube flat 51. For 90° vertical rerouting. The joint is sealed via two O-rings (supplied) and locking slides.

#### Junction 90/75 to flat 51

HDPE junction for connection to ComfoTube 90 or 75 ventilation ducts with flat 51. The joint is sealed via two O-rings (supplied) and locking slides.

#### Junction 90 to flat 51, 90° bend

HDPE junction for connection to ComfoTube 90 ventilation ducts with flat 51 as 90° bend. The joint is sealed via two O-rings (supplied) and locking slides.



Click sleeve flat 51



Locking slide flat 51



Mounting bracket flat 51



End cap flat 51



Bend flat 51 H



Bend flat 51 V

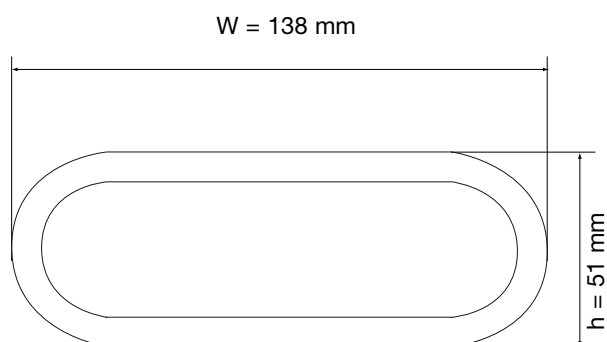
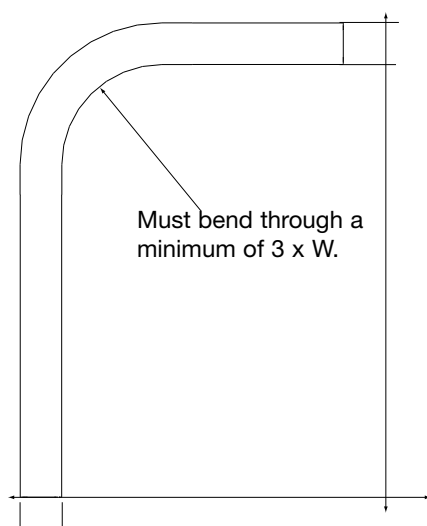


Junction 90/75 to flat 51



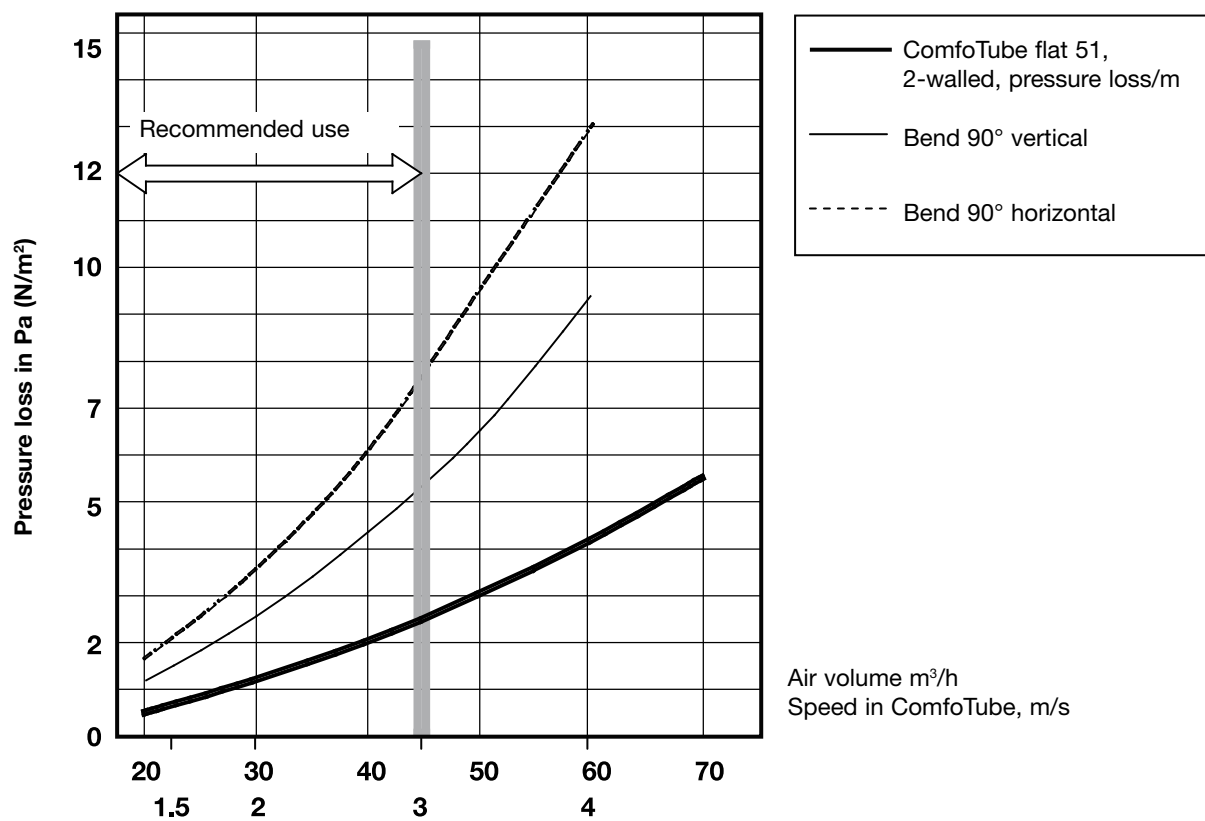
Junction 90 to flat 51, 90° bend

## Dimensional drawing for flat 51



Diagram

Values for pressure loss in components of the ComfoFresh OnFloor air distribution system

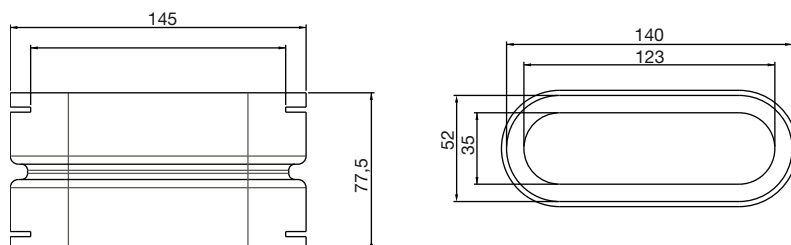


Ventilation tube

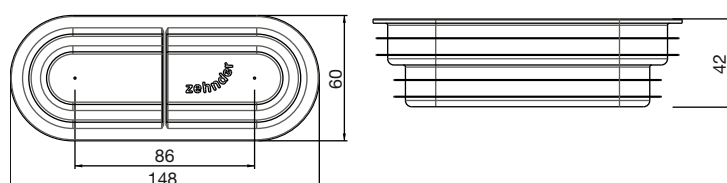
**Zehnder ComfoTube flat 51**

Dimensional drawing for accessories

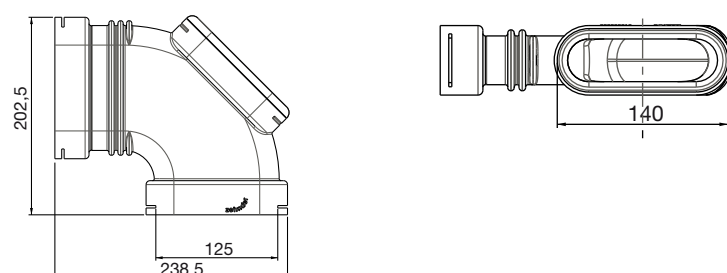
Click sleeve flat 51



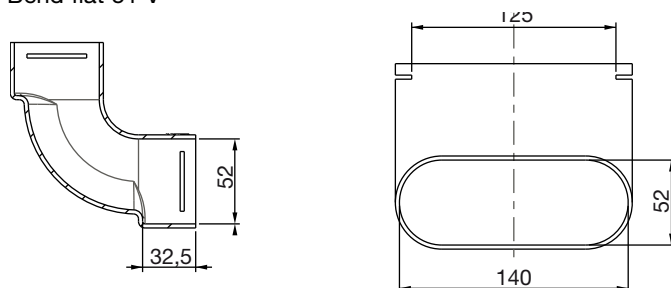
End cap flat 51



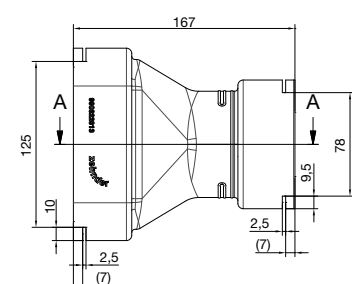
Bend flat 51 H



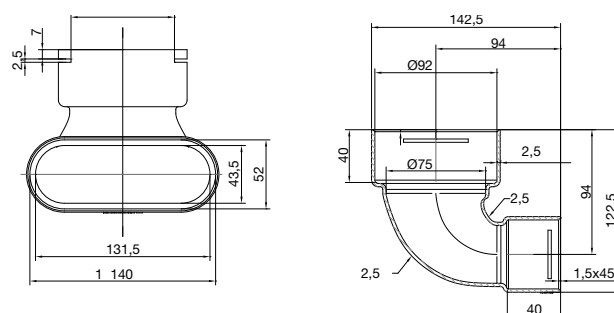
Bend flat 51 V



Junction 90/75 to flat 51



Junction 90/75 to flat 51, 90° bend



CDE-FLYERTS012, V1009, en, subject to changes